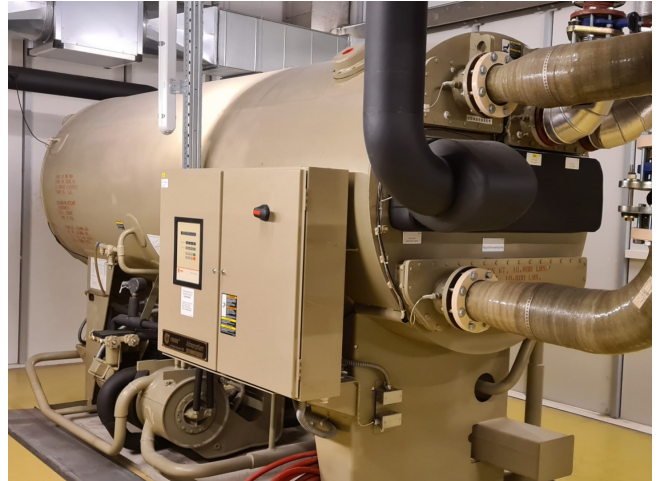


Trane ABSC200 Absorption chiller

Specifications

Brand	Trane
Type	ABSC200 Absorption chiller
Product type	Absorption Chiller
Capacity kW	393,0
Capacity Tons	111,7
Refrigerant	Other
Refrigerant Type	Lithium Bromide
Pump	✓
Weight in kg.	Shipping weight: 5445 kg / Operating weight: 7415 kg
Sizes	4293x1651x2337 mm (LxWxH)
Display	Trane Adaptive control
Remarks	Y.o.b. 2005
Stock	1



Description

Used Trane ABSC200 Absorption chiller

Trane ABSC 200 single stage Steam/Hot water absorption water chiller // Refrigerant Lithium Bromide // Year of manufacturing 2005 with few running hours. For all the other specs, see the picture of the manufacturer model plate or the attached pdf file. When this chiller was operational, it worked in conjunction with a Polacel Coolingtower product number 13016. *All components of this used chiller will be tested on adequate performance, leak free condition (condensing blocks), compressors, fans, control panel, and so forth). Choosing HOSBV means buying with warranty. We perform a industrial cleaning. if requested we can arrange your shipment.

